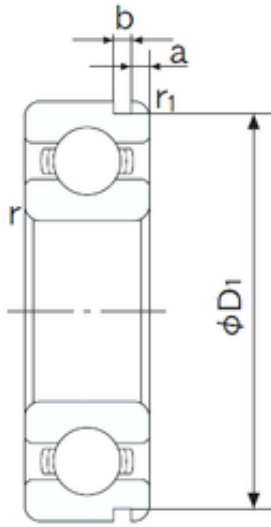




KFY MANUFACTURING MEXICO LIMITED



95 mm x 130 mm x 18 mm NACHI 6919N deep groove ball bearings

Bearing No. 6919N

6919N Bearing 2D drawings and 3D CAD models

Size	95x130x18 mm
Bore Diameter	95 mm
Outer Diameter	130 mm
Width	18 mm
d	95 mm
D	130 mm
B	18 mm
C	18 mm
a	3.3 mm
b	1.3 mm
r min.	1.1 mm
r1 min.	0.5 mm
D1	127.6 mm
Weight	0.576 Kg
Basic dynamic load rating (C)	33,5 kN
Basic static load rating (C0)	33,5 kN
(Grease) Lubrication Speed	4700 r/min
Bore Type	Cylindrical Bore
Enclosure	Open
Configuration	Single Row
Bore Size	95 mm
Outside Diameter	130 mm
Width	18 mm
Fillet Radius/Chamfer	1.1 mm
r1	0.5 mm



KFY MANUFACTURING MEXICO LIMITED

Groove Width	1.3 mm
Groove Diameter	127.6 mm
a (max)	3.3 mm
Dynamic Load Rating	33,500 N
Static Load Rating	33,500 N
Limiting Speed - Grease	4,800 rpm
Limiting Speed - Oil	5,700 rpm
Factor fo	16.5
Radial Clearance	0.012 to 0.036 mm
da (min)	101 mm
Da (max)	124 mm
Dx (min)	137 mm
ra (max)	1 mm
Cy (max)	4.1 mm