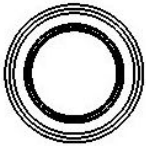
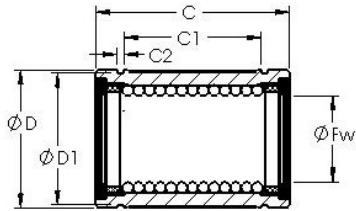




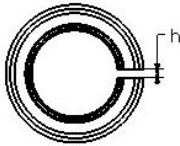
KFY MANUFACTURING MEXICO LIMITED

AST LBE 40 UU AJ linear bearings

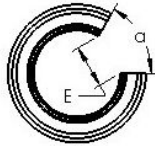
Bearing No. LBE 40 UU AJ



STANDARD



ADJUSTABLE



OPEN

LBE 40 UU AJ Bearing 2D drawings and 3D CAD models

Bore Diameter	40 mm
Bearing Type	sealed, adjustable clearance type
Dynamic Load Rating (Cr)	2,710
Static Load Rating (Cor)	4,890
Shaft Dia. (Fw)	40.000
Outside Dia. (D)	62.000
Length (C)	80.000
Groove-to-groove length (C1)	56.000
Groove Width (C2)	2.100
Groove Dia. (D1)	59.000
Adjustable Open Gap (h)	2.000
Weight (g)	550.00
Material	52100 chrome steel, or equivalent