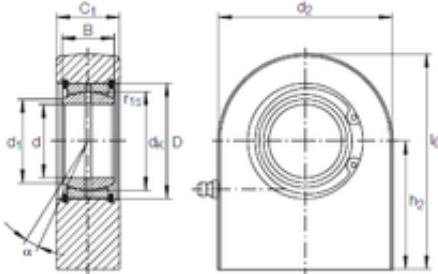




# KFY MANUFACTURING MEXICO LIMITED

20 mm x 35 mm x 16 mm INA GF 20 DO plain bearings



GF 20 DO Bearing 2D drawings and 3D CAD models

Bearing No. GF 20 DO

Size	20x35x16 mm
Bore Diameter	20 mm
Outer Diameter	35 mm
Width	16 mm
d	20 mm
D	35 mm
B	16 mm
d1	24,1 mm
d2	50 mm
dk	29 mm
h2	38 mm
l6 max.	63 mm
r1 min.	0,3 mm
C1	19 mm
C1 max	20 mm
Angle	9 °
Weight	0,35 Kg
Basic dynamic load rating (C)	30 kN