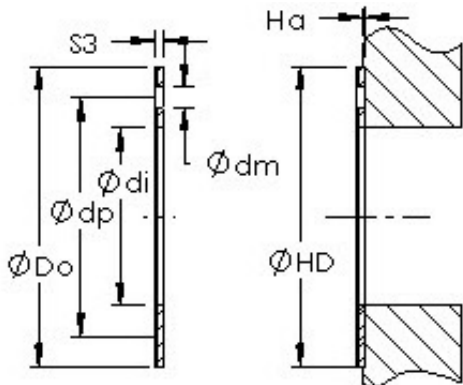




KFY MANUFACTURING MEXICO LIMITED



AST AST20 WC22 plain bearings

Bearing No. AST20 WC22

Bore Diameter	20 mm
Outer Diameter	38 mm
Bearing Type	thrust washer
Shaft Dia., Nominal (d)	20.0000
Bearing Outside Diameter, Nominal (Do)	38.000
Washer Inside Diameter, Nominal (di)	22
Washer Inside Diameter Tolerance (di tol.) - +0.25 / -0	+0.25 / 0
Washer Outside Diameter, Nominal (Do)	38
Washer Outside Diameter Tolerance (Do tol.) - +0 / -0.25	+0 / 0.25
Washer Thickness, Nominal (S3)	2
Washer Thickness Tolerance (S3 tol.) - +0 / -0.05	+0 / 0.05
Mounting Hole Dia. (dm)	3.000
Mounting Hole Pitch Dia. (dp)	30
Housing Counterbore Depth (Ha)	1.00
Housing Counterbore Depth Tolerance (Ha tol.) - +0.2 / -0.2	+0.2 / 0.2
Housing Counterbore Diameter, Nominal (HD)	38.000

AST20 WC22 Bearing 2D drawings and 3D CAD models



KFY MANUFACTURING MEXICO LIMITED

Housing Counterbore Diameter Tolerance (HD tol.)	+0.12 / 0
Material	Carbon steel shell with POM plastic liner