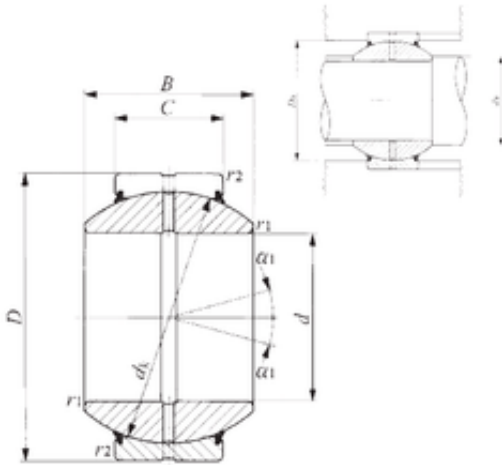




# KFY MANUFACTURING MEXICO LIMITED

## 20 mm x 42 mm x 25 mm IKO GE 20GS-2RS plain bearings



Bearing No. GE 20GS-2RS

GE 20GS-2RS Bearing 2D drawings and 3D CAD models

Size	20x42x25 mm
Bore Diameter	20 mm
Outer Diameter	42 mm
Width	25 mm
d	20 mm
D	42 mm
B	25 mm
C	16 mm
dk	35,5 mm
r1 min.	0,3 mm
r2 min.	0,6 mm
da min.	22,5 mm
da max	25 mm
Da min	37,5 mm
Da max.	37 mm
Angle	16 °
Weight	0,155 Kg
Basic dynamic load rating (C)	55,7 kN