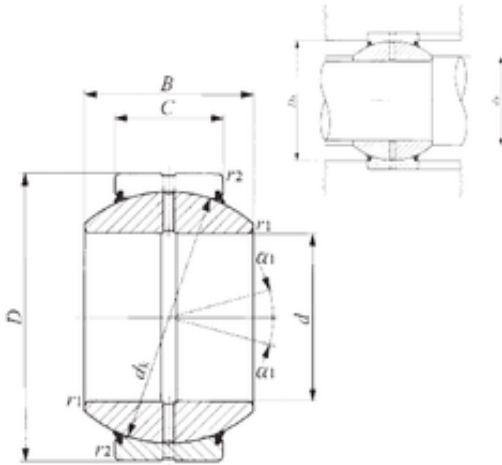




# KFY MANUFACTURING MEXICO LIMITED

## 45 mm x 75 mm x 43 mm IKO GE 45GS-2RS plain bearings



Bearing No. GE 45GS-2RS

GE 45GS-2RS Bearing 2D drawings and 3D CAD models

Size	45x75x43 mm
Bore Diameter	45 mm
Outer Diameter	75 mm
Width	43 mm
d	45 mm
D	75 mm
B	43 mm
C	28 mm
dk	66 mm
r1 min.	0,6 mm
r2 min.	1 mm
da min.	49,5 mm
da max	50 mm
Da min	69,5 mm
Da max.	66 mm
Angle	13 °
Weight	0,66 Kg
Basic dynamic load rating (C)	181 kN