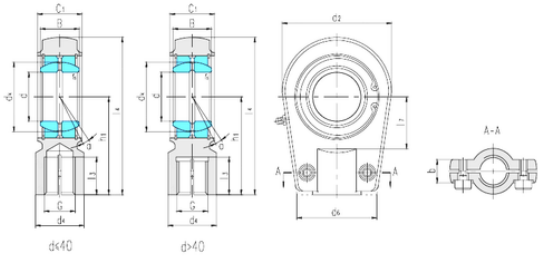




# KFY MANUFACTURING MEXICO LIMITED



## LS SIR50ES plain bearings

Bearing No. SIR50ES

Bore Diameter	50 mm
d	50 mm
B	35 mm
b	37 mm
d2	116 mm
d4	61 mm
d6	90 mm
dk	66 mm
h1	105 mm
l3 min.	45 mm
l4 max.	168 mm
l7 min.	55 mm
r min.	0,6 mm
C1	40 mm
Thread (G)	M45 × 1,5
Bolt (G)	M12 × 40
Angle	6 °
Weight	3,74 Kg
Basic dynamic load rating (C)	156 kN

SIR50ES Bearing 2D drawings and 3D CAD models